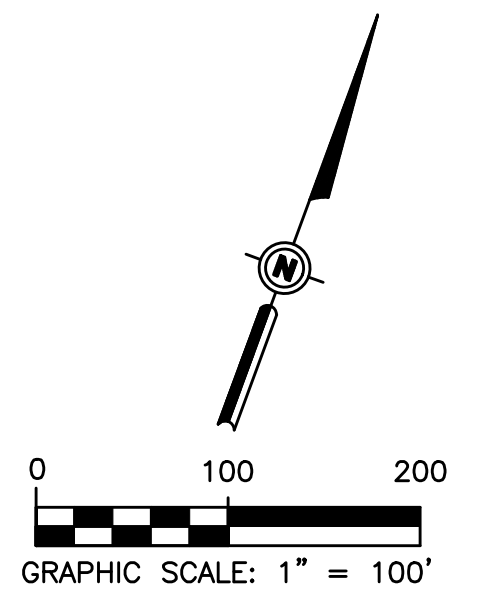
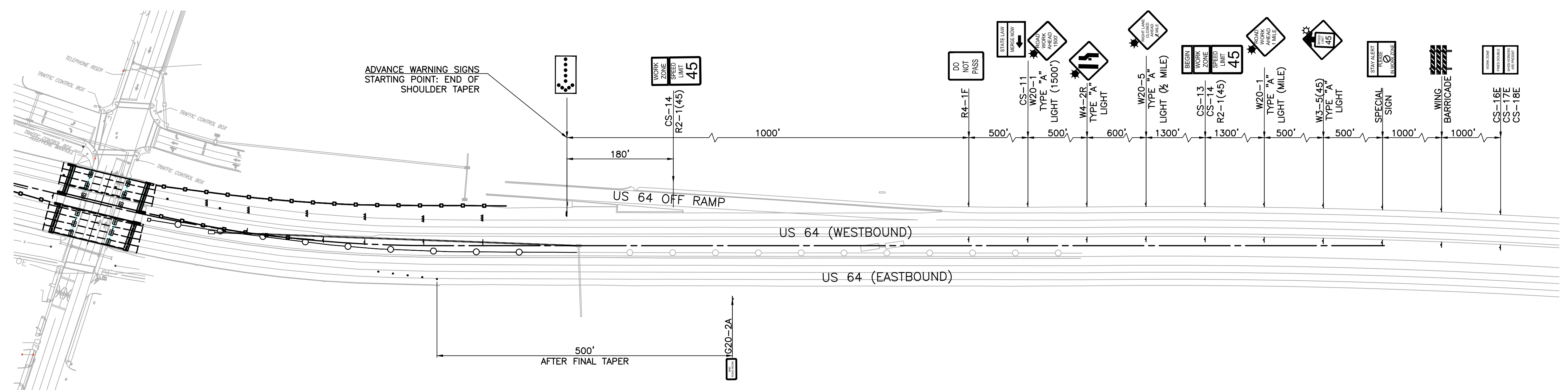


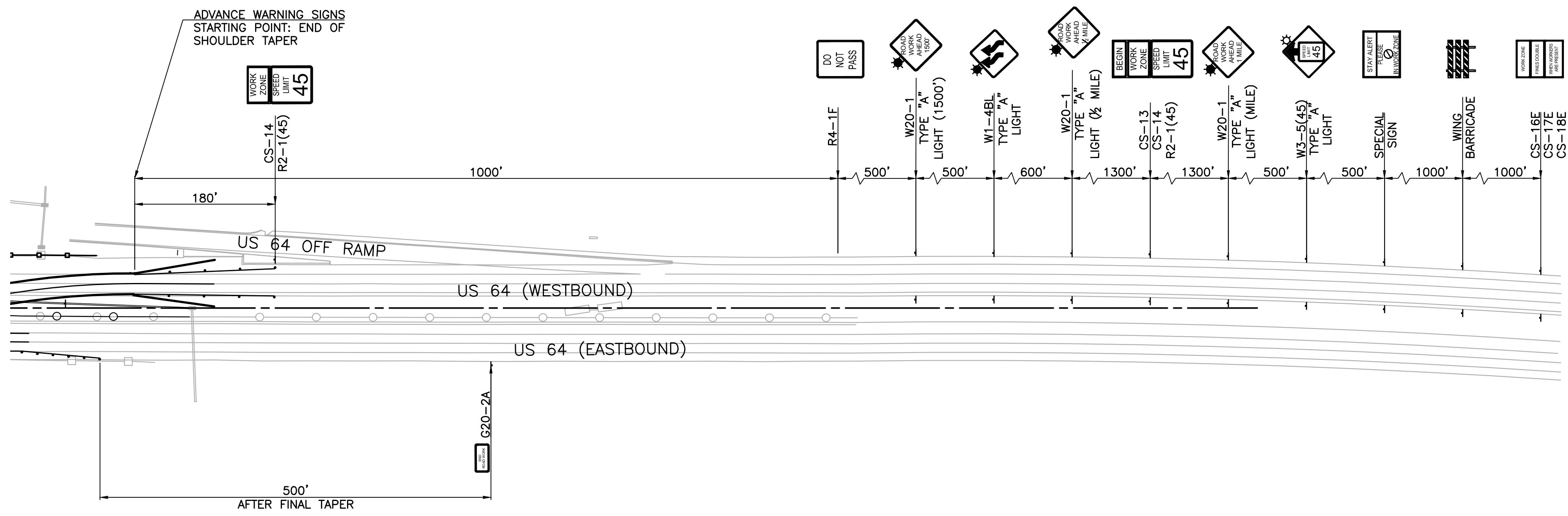
REVISIONS		
REV. NO.	DESCRIPTION	DATE



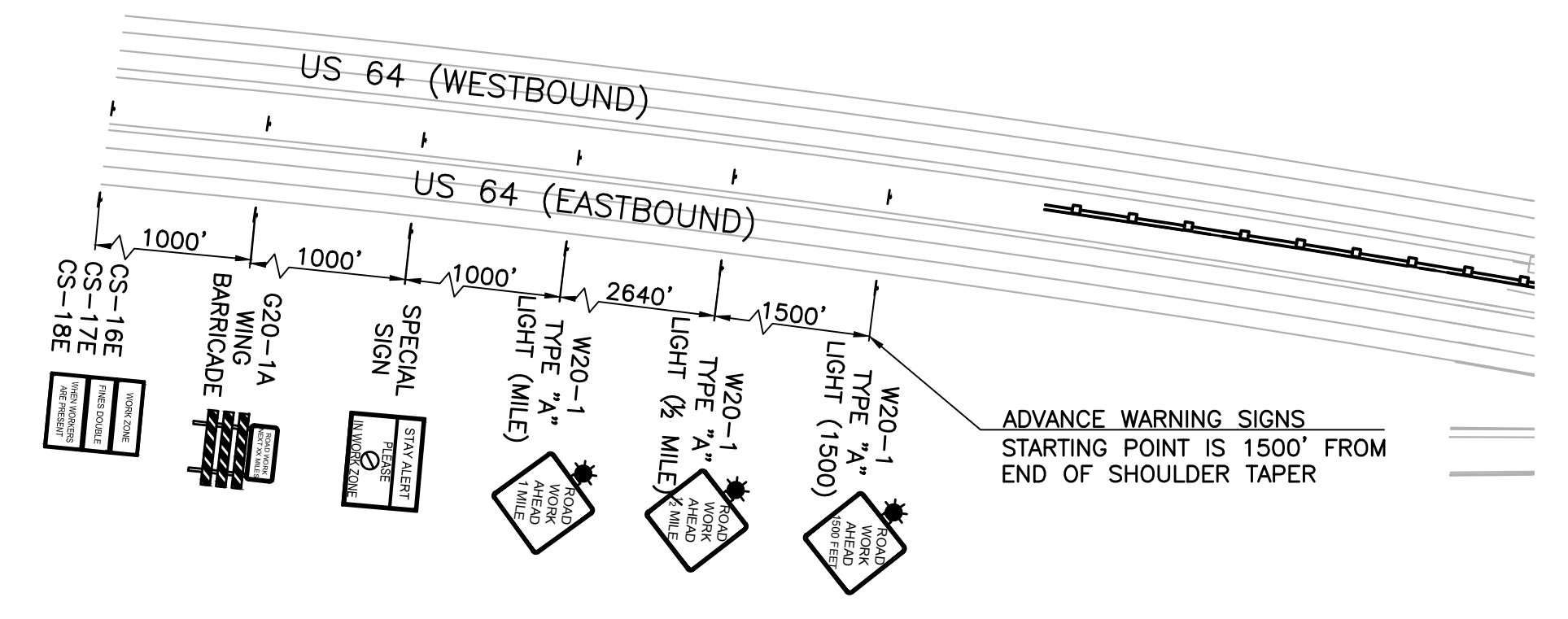
- LEGEND**
- CHANNELIZING DEVICE W/ TEMPORARY STRIPING
  - TYPE III BARRICADE
  - ARROW DISPLAY
  - SIGNS
  - PORTABLE LONGITUDINAL BARRIER (W/ GLARE SCREENS)
  - PORTABLE LONGITUDINAL BARRIER



**LANE CLOSURE ADVANCE WARNING SIGNS**  
 (INSIDE LANE CLOSURE SHALL MIRROR THE OUTSIDE LANE CLOSURE SHOWN)  
 (EB STARTING POINT: STA. 186+40  
 WB STARTING POINT: STA. 209+00)



**LANE SHIFT ADVANCE WARNING SIGNS**  
 (LEFT-TO-RIGHT LANE SHIFT SHALL MIRROR THE RIGHT-TO-LEFT LANE SHIFT SHOWN)  
 (EB STARTING POINT: STA. 186+40  
 WB STARTING POINT: STA. 209+00)



**TYPICAL APPLICATION ADVANCE WARNING SIGNS**

DESIGN	DGS	11/16	TULSA COUNTY	US-64 OVER 97TH W. AVE.
DRAWN	SDK	11/16	OKLAHOMA DEPARTMENT OF TRANSPORTATION	
CHECKED	HRA	11/16	<b>TRAFFIC PHASING</b> <b>US 64</b> <b>DETAILS (SHEET 1 OF 2)</b> STATE JOB NO. 28884(04) SHEET NO. 22	
APPROVED				
WALTER P MOORE				

X:\M12\2015\2005-07 0007 EC-1414 US-64 Task 5\Civil\Draw\17-23-M12-2005-07-TRAFIC CONTROL.dwg Jun 12, 2017 - E1:10m sarak